



# Dispatcher Phoenix

## Worldox Connector Installation

The Worldox Connector distributes files to the Worldox® Document Management System by World Software Corporation. This Connector is available as an optional module for all versions of Dispatcher® Phoenix. Using the Worldox Connector, files can be indexed, processed, and routed to Worldox directly from the MFP panel or via an automated workflow.

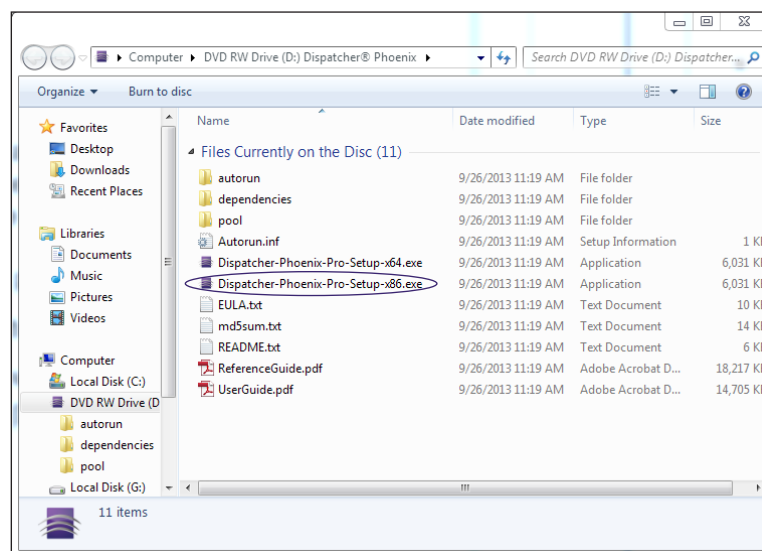
The Worldox Connector requires:

- Windows Vista or higher
- 32-bit version of Dispatcher Phoenix

If you have a 64-bit version of Dispatcher Phoenix already installed and want to install the Worldox Connector, you must uninstall Dispatcher Phoenix first and then reinstall the 32-bit version. Note that this will not change your license.

To install the 32-bit version of Dispatcher Phoenix, please follow these steps:

1. Insert the Dispatcher Phoenix CD/DVD into the appropriate drive.
2. Ignore the AutoPlay window; instead, browse through the CD in Windows Explorer until you find the 32-bit installer (Dispatcher-Phoenix-Pro-Setup-x86.exe).
3. Double-click on the 32-bit installer (circled below):



4. Continue with the installation process, as outlined in the *Dispatcher Phoenix User's Guide*.