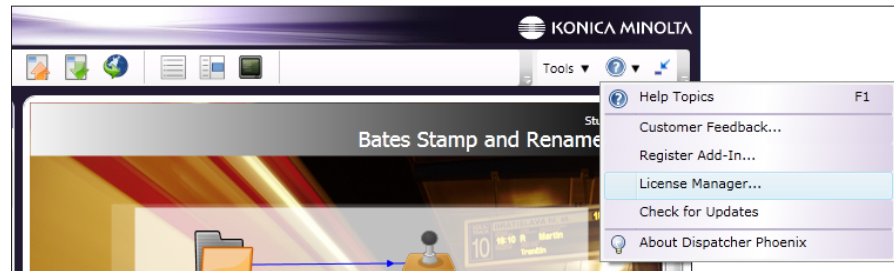




## Manually Installing A License

To active a new license, do the following:

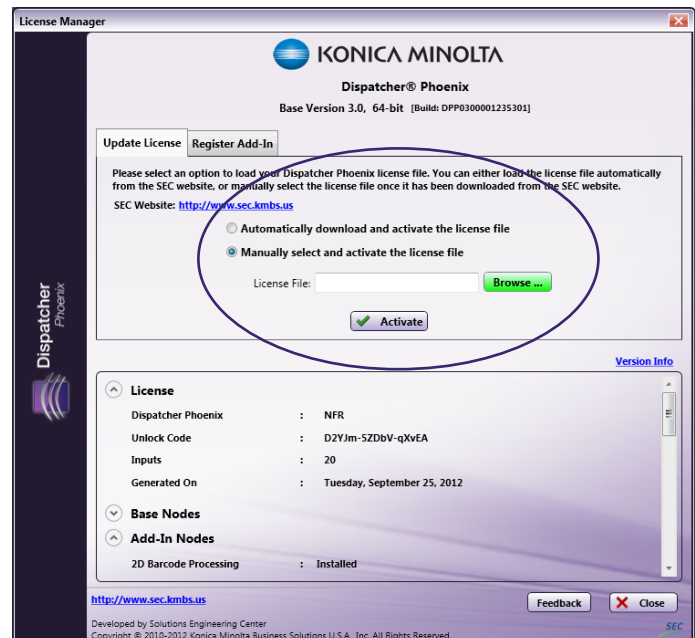
1. **DOWNLOAD THE ATTACHED LICENSE FILE** to your Desktop.
2. **LAUNCH DISPATCHER PHOENIX.**
3. **OPEN THE LICENSE MANAGER.** On Dispatcher Phoenix's main application screen, click on the **Help** button and choose the **License Manager...** option from the drop-down list that appears.



The License Manager window will then appear.

4. **CHOOSE MANUAL OPTION.** On the License Manager window, select the **Manually select and activate the license file** button; then click on the **Browse** button to find the license file that you just downloaded.
5. **FIND AND SELECT LICENSE FILE.** On the **Select a license file** window that appears, find and select the \*.zip file; then click on the **Open** button to close the window and return to the License Manager window.

The selected \*.zip file should now be populated in the License File field.



6. **ACTIVATE THE NEW LICENSE** by clicking on the **Activate** button. If prompted, start the Add-In Manager to perform any updates or installs.
7. **CLOSE/RESTART APPLICATION.** Once completed, close Dispatcher Phoenix and then restart the application again in order for the new license to take effect.

01/1013