



KONICA MINOLTA



ENHANCE BUSINESS PRODUCTIVITY WITH **DISPATCHER STRATUS**

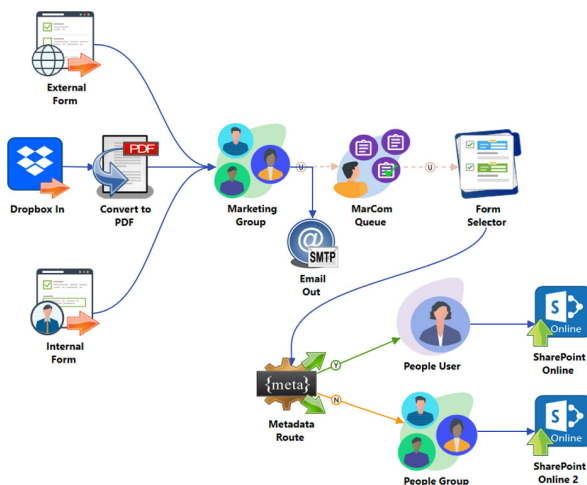
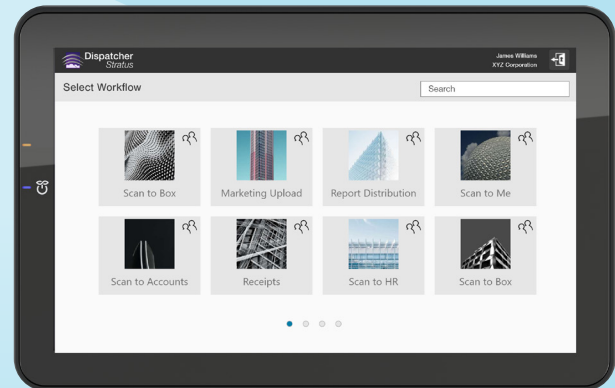
The Ultimate True-Cloud Workflow Solution



Dispatcher
Stratus

For businesses to boost productivity, efficient document processing automation is crucial. However, human involvement remains essential to many processes. Meet Dispatcher Stratus - the perfect blend of Intelligent Document Processing (IDP) and human touch.

From automating tasks like data extraction, document routing, and renaming to enhancing manual processes such as order approvals, talent management, and document evaluation, Dispatcher Stratus elevates productivity across the board. Designed as a true cloud-based solution, Dispatcher Stratus minimizes overhead and maximizes efficiency in your organization.



The advanced workflow solution you've been searching for

Using Dispatcher Stratus, customers can manage their workflows, users, devices, and more from a single location that is accessible from anywhere. The application is designed to streamline and consolidate your organization's processes by incorporating People-Based Workflows into Intelligent Document Processing (IDP). That means the processes that can be automated are automated, and the processes that require a human touch are simple to accomplish.

YOUR ORGANIZATION CAN USE DISPATCHER STRATUS TO:

- Enable employees to access documents when and where they need them.
- Empower users to collaborate on recurring tasks.
- Quickly and easily monitor workflow progress and ongoing tasks.
- Capture paper-based and electronic documents into any workflow for processing.
- Create digital forms for document generation and data capture.
- Use powerful integrations to automatically process and route documents and data.
- Remediate data across several locations to minimize the risk of human error.
- Streamline document verification and approval workflows.

Simple Scalability

Dispatcher Stratus is designed to match your organization's needs exactly. Easily add, group, and remove employees, devices, workflows, and forms as your needs change.

Boost Productivity

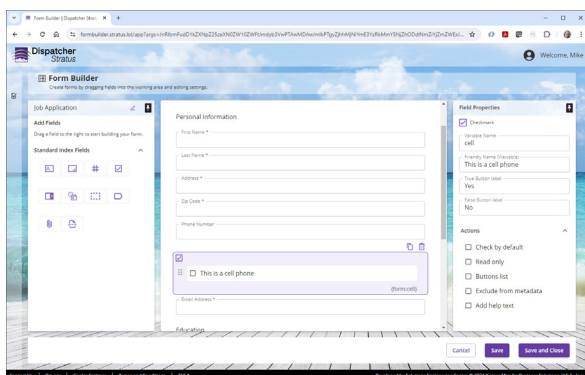
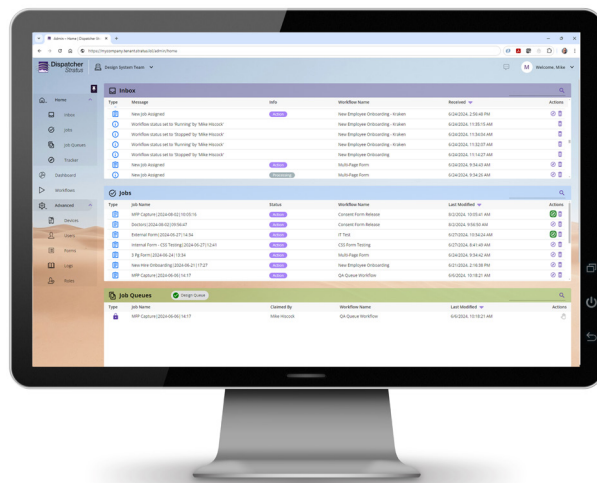
Dispatcher Stratus allows organizations to send jobs to individuals, groups, or queues, ensuring that every job is made available to the right employee. The Jobs interface provides vital information, including areas for document previews, notes, job history, and more.

Maximize Your Existing Resources

Dispatcher Stratus takes advantage of your existing hardware and connects to the software and cloud storage solutions you're already using. Most importantly, it frees your employees from time-consuming manual tasks and lets them focus on growing your business.

Automation at your Fingertips

Dispatcher Stratus offers many advanced processing capabilities to ensure your documents are renamed, annotated, modified, and converted the way your organization needs. Additional features include connections to ODBC-compliant databases, metadata manipulation with LUA scripting, and more.



Web Forms Process Management

Dispatcher Stratus supports custom form creation and management, meaning that your workflows are even more accessible than ever before. Documents and data can be captured from native form submissions that minimize dependencies on inefficient paper forms and PDFs. Forms can be branded or embedded within your existing website and can be tracked and interacted with from the Dispatcher Stratus portal.

Solutions to fit your business needs

Dispatcher Stratus can be licensed in one of three unique tiers to meet the needs of your organization:

- **Starter:** End-to-end workflow automation and intelligent document processing.
- **Business:** Standard people-based workflow capabilities to drive user-to-user collaboration.
- **Enterprise:** Advanced people-based workflow with enterprise-ready automation and collaboration tools.



Feature	Starter	Business	Enterprise
Scalability Infrastructure Powered by AWS	✓	✓	✓
Unlimited Custom Workflow Creation	✓	✓	✓
Easy Onboarding with Sample Workflows	✓	✓	✓
Scan Capture from Konica Minolta MFPs	✓	✓	✓
Electronic Document Capture	✓	✓	✓
Zonal OCR and Document Renaming	✓	✓	✓
Intelligent Routing	✓	✓	✓
Direct Connectivity to Cloud Solutions	✓	✓	✓
Standard Form Management for Document Indexing	✓	✓	✓
User Authentication at the MFP	✓	✓	✓
Monitor MFP Security with bizhub SECURE Notifier	✓	✓	✓
Release2Me Cloud Secure Print Release	Available Add-On	Available Add-On	Available Add-On
User-to-User Job Routing		✓	✓
Customizable User Roles & Permissions		✓	✓
eForm Capture with Optional Authentication		✓	✓
Real-Time Job & Workflow Notifications		✓	✓
Additional Connectors to Document Management Solutions		✓	✓
Advanced Form Management with Stylization and Branding Options			✓
Advanced eForm Capture with Customizable Authentication			✓
HTML Embedded Stratus eForms			✓
Group and Queue Job Routing			✓
Stratus eSignature Workflows			✓

LET'S GET STARTED

Small office? No problem. Fortune 500 company? We've got you covered. Different departments need different workflows, users, roles, and even billing? Dispatcher Stratus can be customized to provide your company with exactly what it needs.

Don't waste another minute with outdated, inefficient processes.
Find the right fit for your business today.



KONICA MINOLTA

KONICA MINOLTA BUSINESS SOLUTIONS U.S.A., INC.
100 Williams Drive, Ramsey, New Jersey 07446

CountOnKonicaMinolta.com

© 2025 KONICA MINOLTA BUSINESS SOLUTIONS U.S.A., INC. All rights reserved. Reproduction in whole or in part without written permission is prohibited. KONICA MINOLTA and the KONICA MINOLTA logo are registered trademarks or trademarks of KONICA MINOLTA, INC. All other product and brand names are trademarks or registered trademarks of their respective companies or organizations.



Dispatcher Stratus
07/2025-X